

AIR SAFE™



Webinar Aug 31
Air Hitches For Smoother Rides

1

Introduction

- **Lloyd Stegemann**
 - Sales for Air Safe Hitches
 - East Coast Partners Grp
 - Located in New York
 - 18 years experience
- **Web Site [FAQ's](#)**

2

Agenda

- How to find any air leaks you may have
- Warranty and life expectancy of different parts of the hitch
- How to set the correct air pressure (5th Wheel, Gooseneck, & Receiver)
- Hitch questions (5th Wheel, Gooseneck, & Receiver)
- Installing your 5th Wheel on new truck
- Standard Maintenance
- Would you like to upgrade and trade in your older hitch?

3

How to find any air leaks

- **Test for Air Leaks**
 - Mix Soap and Water or use Windex and spray fittings
- **Release Air Lines**
 - Push the ring on the end of the air fitting next to the air line and then pull the air line out.
- **Insert Air Lines**
 - Push the air line into air fittings, the air line will slide in easily to the lock. You must push the air line past the first stop until it seats into the connector.

4

Warranty and life expectancy of different parts of the hitch

- Hitches have a 2-year warranty
- Possible parts replacements (Depend on usage)
 - Shocks 7 plus years
 - Air Bags 8 plus years
 - Air Lines 8 – 10 Years
 - Receiver Ty-Rods 8 years (Depend on usage and GTW /TW)

5

How to set the correct air pressure - 5th Wheels

- **Setting the Initial PSI Air**
 - Fill it up to 90 and no more than a 100 PSI without the trailer
 - Hook up the trailer. Ensure that the head is locked.
 - Raise the jacks on your trailer.
 - Then let air out unit until you reach the middle of green zone on the shocks.
 - Alternate setting - the end of the Towers and the bump stops on each corner should be about $\frac{3}{4}$ to 1-inch distance.

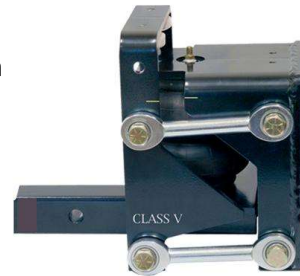


6

How to set the correct air pressure - Receiver

Setting the Initial PSI Air

- Fill it up to 90 and no more than a 100 PSI without th trailer
- Hook up the trailer.
- Release the air until the bars are level or slightly elevated toward the trailer.



7

How to set the correct air pressure - Gooseneck

Setting the Initial PSI Air

- Fill it up to 90 and no more than a 100 PSI without the trailer
- Hook up the trailer.
- Release the air until the Pin on the driver side is in the middle of the slot (Green Zone)



8

5th Wheel Hitch Questions

- **Installing your older hitch on a new truck**
 - Standard Rails
 - Underbed adapters
 - Ford (All years and models use the same Ford adapter)
 - Dodge (All years and models use the same Dodge adapter)
 - GMC (2018-2019 use one GMC version, 2020 and up use another GMC version)
- **Is it hard to replace the air bags?**
 - No, there is a simple process that does not require a complete disassemble of the hitch
- **What is the Flow Control Valve standard settings? 1 ½ turns open**

9

Receiver Hitch Questions

- **Is the hitch model depending on the GTW/Tongue Weight? (Yes)**
- **Can I use a higher rated hitch on a smaller trailer?**
 - Yes, you would have less air in the bag
- **What kind of weather can the hitch ne used?**
 - Any kind of weather
 - Make sure to clean up the hitch after using in Snow/Ice
- **Is it hard to replace the air bags?**
 - No, there is a simple process that does not require a complete disassemble of the hitch



10

Gooseneck Hitch Questions

- Installation should be front to back for the position of the air bags
- Hitch comes in 4" round and square
- Ensure the chains don't get caught when turning
 - Suggestion: Use bungee cords to lift the chains from the truck bed
- Is it hard to replace the air bags?
 - No, there is a simple process that does not require a complete disassemble of the hitch
- Locking your trailer hitch when not attached to truck
 - Take the safety chains that attach to the truck and wrap around the bottom of the couple and use a paddle lock to prevent someone from sliding the hitch out or connecting to your trailer.

11

Installing your 5th Wheel on new truck

- Standard Rails
- Underbed adapters
 - Ford (All years and models use the same Ford adapter)
 - Dodge (All years and models use the same Dodge adapter)
 - GMC (2018-2019 use one GMC version, 2020 and up use another GMC version)

12

Standard Maintenance

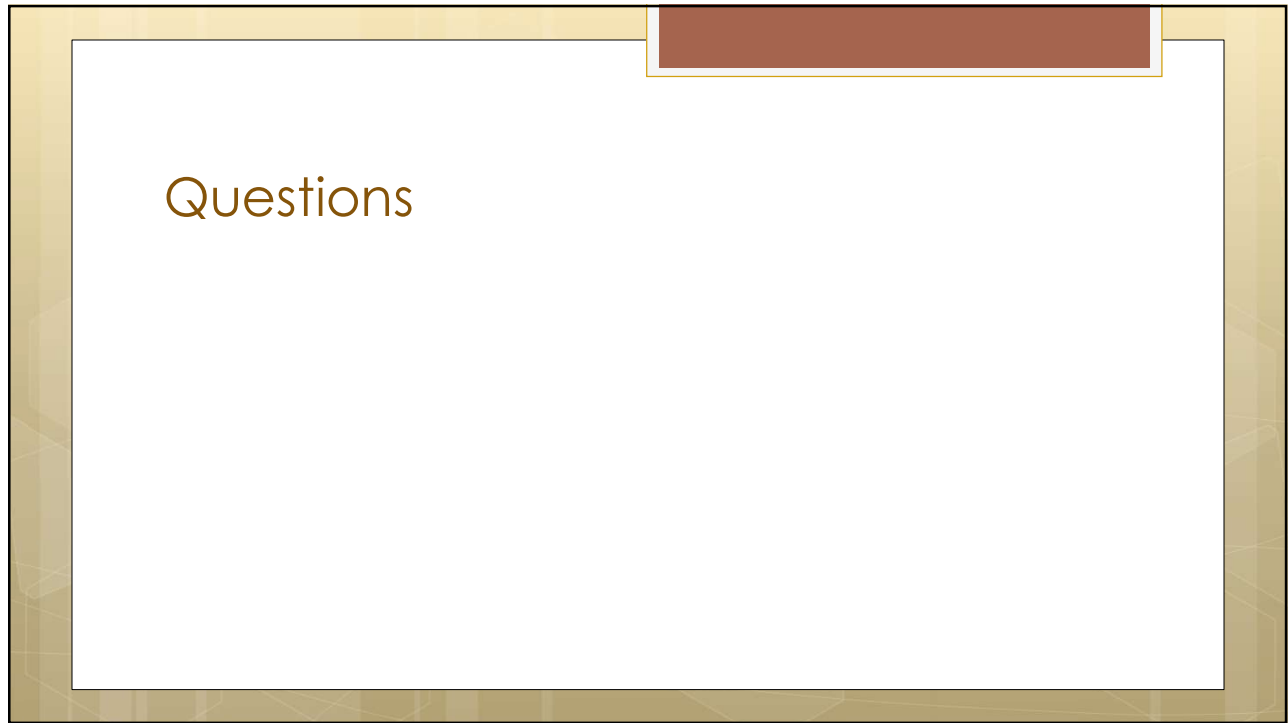
- **Should I leave air in the hitch when not using?**
 - Yes
- **Do I need to lubricate any parts?**
 - **Receiver** - No except for the ball
 - **Gooseneck** - No except for the ball
 - **5th Wheel** - No except the head, use a Teflon lube plate or dry lube grease
- **Inspect the hitch before using**
- **Check to see if hitch is in green zone**

13

Would you like to upgrade and trade in your older hitch?

- **We are discussing the program**
 - Only Air Safe Hitches
 - Must be in working condition
 - Discounted price on new hitch
 - Trade in allowance for the old hitch
 - Shipping cost (new and old hitches)
- **If interested email lstegemann@airsafehitches.com :**
 - Name and address
 - Picture of current hitch
 - What hitch are you looking at to purchase?
- **We will review and let you know what we will do**

14



15